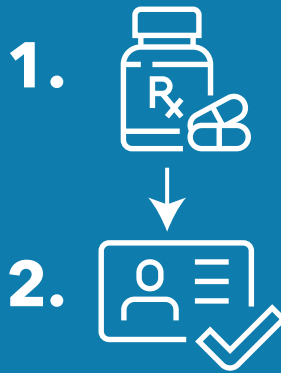


# Some things just **don't make sense...**

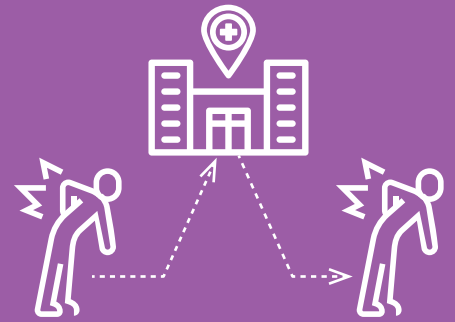
You don't put your scrubs on before you shower



You don't administer medication before scanning PPID



You don't discharge the patient before treatment



## You know what else doesn't make sense?

Paying NNU for a labor contract that takes away what matters most, which could:



- **Block** you from receiving out-of-cycle pay increases



- **Place restrictions** on your ability to adjust your schedule for personal needs or work-life balance



- **Prohibit** leaders from assisting with patient care when you need support



- **Lock** you into a fixed-term agreement without room for adjustment

## Working together directly just makes sense.

**MedStar Montgomery  
Medical Center**

Visit <https://mmmcnursesfacts.net/facts-about-union-organizing/> for more information about unions and union organizing.



**MedStar Health**